

Wollaston Together

Issue fourteen

FREE

Summer 2025



www.wollastonttogether.co.uk

3	Discover Wollaston
4	Editors Letter
5	Discover more online
6	Wollaston Parish Council
7	Wollaston Parish Council
8	Wollaston Community Library
10	North Northamptonshire
11	Wollaston tots
12/13	Busy Bees
14	Charity Jazz Night
15	Charity Jazz Night Poster
16	Dogs for Good
17	Dogs for Good
18	St Johns Ambulance Advert
19-21	Wollaston Heritage Society
22-24	Community Calendar
25	Bernard Smart Memories
26	Wollaston Girlguiding
27	St Mary's Church
28	Wollaston Baptist Church
29	Wollaston Cricket Club
30	Wollaston Victoria Football Club
31/32	Village Hopper timetable
33	Occasional Art
34/35	Local Ads
36	Daylight Veggie Patch



Contents

**If you would like to advertise
with the**

**Wollaston Together Magazine
please do email us at
Wollaston.ec@gmail.com**

Deadline for the next edition of the
magazine is: Monday 18th August 2025

This editions front cover has been taken by
M Milroy

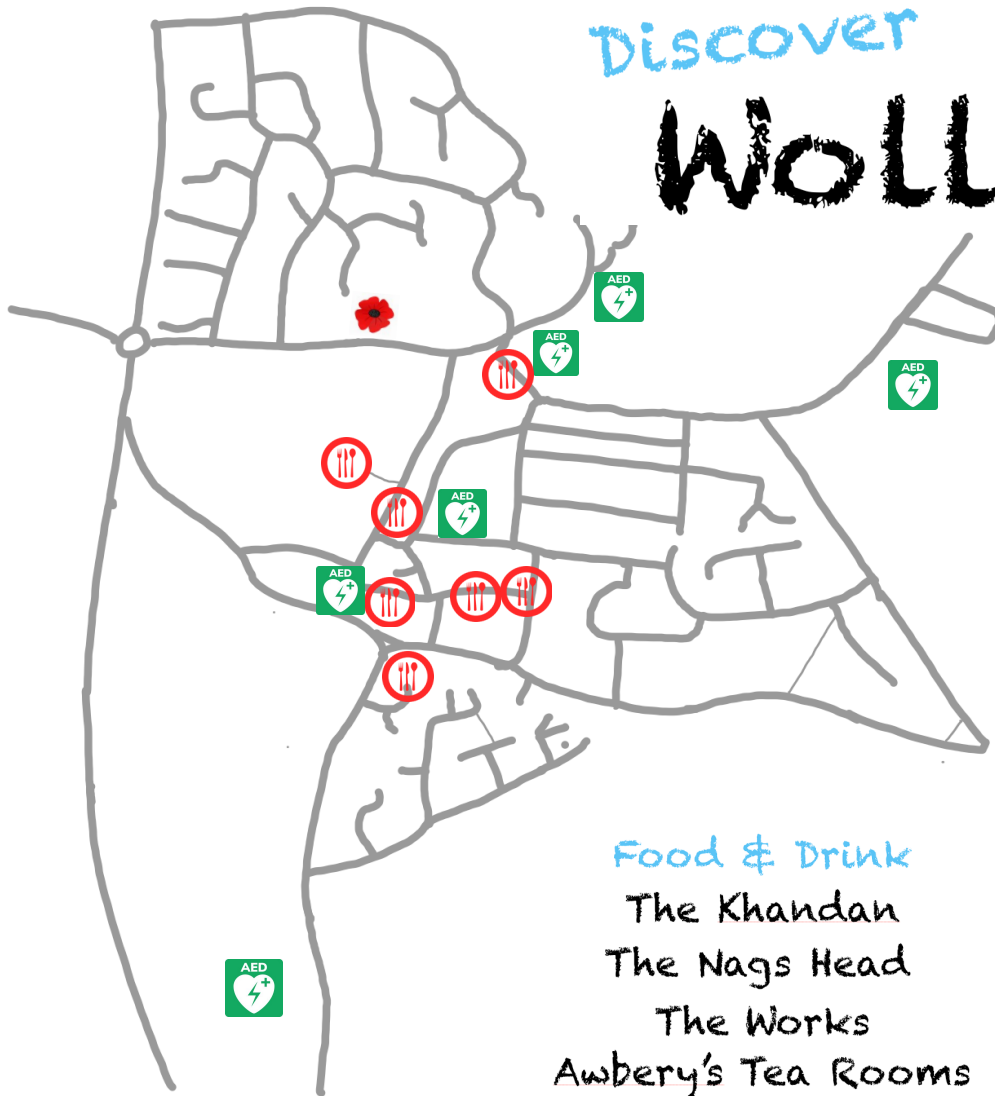
If you have finished reading this magazine,
why not pass it on to a friend or recycle it?





Discover

Wollaston



Defibrillators



Food & Drink

Food & Drink

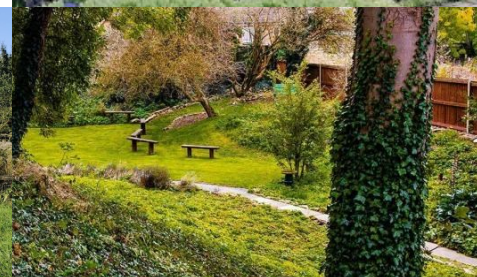
The Khandan
The Nags Head
The Works
Awbery's Tea Rooms
Village Fryer
Jade Wollaston

History & Culture

Wollaston Museum
Wollaston War Memorial
Historical Walk
Manchester bomber memorial

Outdoors & Nature

The Pocket Park
Wollaston Playing Fields





Editors Letter

June 2025

Photo by Rebecca Milroy

Dear Readers

Welcome to the Summer edition of Wollaston Together. We have seen several changes to our community in recent months. Some are positive like the upgrade to the MUGA (the old tennis courts) in the playing fields funded by S106 monies and actioned by the Parish Council and the playing fields committee. Some are negative, the sad loss of valued members of our community. Some changes have yet to have an effect on us with the change of North Northamptonshire Council from Conservative control to that of Reform.

Wollaston has a very strong sense of community and will no doubt weather any changes but this is down to the continued commitment of volunteers working behind the scenes and putting every effort to ensure things happen but they do need continued support.

Michele

Michele Milroy Editor of the Wollaston Together
Contact: wollaston.ec@gmail.com
Website: www.wollastonttogether.co.uk

Discover Local Radio

Click on the logos to be taken to the stations.



Rushden Lakes

www.rushdenlakes.com



Discover Northampton

discovernorthampton.co.uk



The Wildlife trust

wildlifebcn.org



Wollaston Pharmacy

<https://croylandpharmacy.com>



Wollaston Doctors Surgery

wollastonbozeatsurgery.co.uk



North Northamptonshire Council

www.northamptonshire.gov.uk



Street Doctor

[FixMyStreet \(northamptonshire.gov.uk\)](http://FixMyStreet(northamptonshire.gov.uk))



Northamptonshire Police

www.northants.police.uk



Wollaston Parish Council

www.wollastonparishcouncil.gov.uk

Discover more online

Click on the underlined links or type them into a search browser.

CHAIRMAN'S REPORT:

I begin this report by informing you of the sad loss of two members of this Council, Richard Talbot and Philip Boycott. On behalf of the Parish Council, I have visited both families to express our regret on their loss and have left my contact details should they require any help or assistance.

Communication between the members of the Pre School development group and these two bodies has been very difficult due in part to the reducing birth rate in the County and reflected across the UK. Be that as it may, I would like to thank Councillors Mitchell, Goldsmith and Carter for the time and effort that they have put in while trying to move this project forward.

The Parish Council's proposal has been delivered to the above teams and rejected by them, as not offering what they believe is the current need for parent support and children development in the future. It would appear that there is less need for a Pre School, however, there appears to be a great need for infant support.

Needless to say, that this would bring a whole new set of challenges and a review of the allocated space in the plans for the redevelopment of the Village Hall. Be that as it may, the Parish Council has now put the ball into NNC's court and asked them what the village needs to do to ensure that the S106 monies allocated to Child Care, is fully utilised to the benefit of parents in Wollaston.

On the plus side, the Playing Fields Committee, which is made up by Parish Councillors and members of the Community, were successful in applying for S106 monies allocated to Community Sport. These funds were used to purchase and lay the new MUGA (Multi Use Games Area) pitches at the playing fields.

That aside the past year has seen little change. The Parish Council has been fortunate to have been able to co-opt Councillors to replace those who have stepped down due to other commitments. The loss of Callum Boddington in particular has been unfortunate and brought its own challenge as Callum's drive, supported by Cllr Michele Milroy was the push behind a number of Community events which served to unite the Community and show that there is life after Covid!

Cllr Milroy has also sadly now decided that she will step down from the Parish Council, however she has very kindly offered to continue to manage the Wollaston Together village magazine.

The Parish and the NNC elections took place on the 1st May 2025. The parish Council lost two sitting Councillors, who have decided not to stand again, so may I take this opportunity to thank Michele Milroy and Jonny Alms for their support and involvement during the years that they have been active members of the Wollaston Parish Council.

The Clerk put a call out for members of the Community to step up and support the future of Wollaston and I am pleased to report that we had nominations from four candidates and as the Council stays at 13 there was no need to hold an election to the Wollaston Parish Council this year.

I would also like to take this opportunity to thank Cllrs Savage, Threadgold, Jones, Boycott and Talbutt for their active roles in the Parish Working parties and in particular making sure that the Village is kept clean and tidy, and the interests of the Community are at the forefront of all that the Parish Council does.

Last but not least, I would like to thank Suzanne our Clerk, for her steadfast efforts in ensuring that the standards demanded for local Government institutions are properly managed and regularly updated. I have enjoyed working with Suzanne who has been very supportive of myself as Chair and prompts and guides as required.

I would like to offer my thanks to all Councillors, past and present, for all their efforts in promoting strong values to show a lead to the Community and take Wollaston forward.

Lindsay Alvis

Chair

Wollaston Parish Council

WOLLASTON LIBRARY AND COMMUNITY HUB

OUR OPENING DAYS / HOURS ARE AS BELOW:

MONDAY 10 - 12PM
TUESDAY 1- 4PM
WEDNESDAY 9.30 – 12PM
THURSDAY 2.30 – 4.30PM
SATURDAY 9.30 – 12PM

Just to remind everyone that our current groups are as follows:

Coffee and Chat **every Monday (except Bank Holidays) from 10.30-12pm**, £2 for coffee/tea and homemade cake/biscuits, £1 for just a drink.

Knit and Crochet group **every Tuesday from 2-3.30pm**: no charge.

Rhymetime **every Wednesday during term time from 10-10.30am**. This is for under 5s, a free activity but we welcome any donation to help keep our library open, run by W&S Preschool.

Back-room poetry group – **1st Thursday of month 3-4pm**: no charge.
Photography for all – **2nd Thursday of month 2-30-4pm**: no charge.
Book group – **last Thursday of month 2.45pm onwards**: no charge.

There are always refreshments available, so please just ask if you'd like a hot drink – all £1 each. We also have squash for children or those wanting a cold drink.

Don't forget that we have a meeting room available to hire, also the library space as well. In our meeting room we now have audio visual equipment and a flipchart – so ideal for meetings/presentations. Please email us if interested or pop in if you'd like to have a look!

Summer Reading Challenge starts on 19th July 2025 more details will be sent out to the school nearer the time.

You can contact us on Facebook, email us at: wollastoncml@gmail.com, call us on 01933 231525 or just pop in when we are open (details above).

We look forward to welcoming you all.





North
Northamptonshire
Council

Cllr Jon-Paul Carr

jon-paul.carr@northnorthants.gov.uk

Tel: 01933 382476



Cllr Gordon Dunsmuir

gordon.dunsmuir@northnorthants.gov.uk



Cllr Tom Partridge Underwood

tom.partridge-underwood@northnorthants.gov.uk

Tel: 01933 665167



Report a Pot Hole

[North Northamptonshire Council FixMyStreet \(northnorthants.gov.uk\)](http://northnorthants.gov.uk)

Contact North Northamptonshire Council

[Contact us | North Northamptonshire Council \(northnorthants.gov.uk\)](http://northnorthants.gov.uk)

2ND WOLLASTON SCOUT GROUP

The Scout Group has had a busy month or so.

St George's Day is a significant date in the Scouting calendar, when all members renew their Scout Promise. The traditional parade through Wellingborough ceased a few years ago because of the cost of road closures and Police cover. For a few years after that, the District gathered at Dale End (the District HQ in Croyland Road) for a joint celebration but this year it was decided that each Group should mark the day in their own way, preferably doing something unique and interesting. We decided to hold a morning of activities in the grounds of Wollaston Museum before renewing our promises at the top of Beacon Hill. Many thanks to Wollaston Heritage Society for making this possible.

One of our Beavers, with help from his grandmother, ran a cake stall to raise money for Guide Dogs for the Blind.

On May 8th, the Scout Group assisted in the VEDay80 celebration by providing the gas for the beacon. The event was too late in the day for our young members but several of the adult team were there.

Shortly after this was the Waendel Walk weekend. We kicked this off with several Squirrels, Beavers, Cubs and Scouts taking part in the Friendship Walk on the Friday evening. On the Saturday, the Group ran the Wollaston checkpoint at The Hill. Alongside this, we ran a food stall in the Hill's front garden, raising much needed funds for the group. We also sold more cakes for the Guide Dogs. Thanks go to the Hill for accommodating us.

At the end of May, we will be taking a party of 39 young people and 19 adults to our annual week-long camp. This year, we are returning to the Robin Hood Scout Activity Centre in Sherwood Forest. Lots of outdoor activities are planned (wet weather plan: the same but wear a coat!). After camp, we have the run in to the summer holidays, all sections doing as much out of doors as we can to make the most of the (hopefully kind) weather.

Paul Palmer

GSL

2nd Wollaston



Wollaston tots group

New friendly tots group Thursdays 9.15-11 Term Time only

A place parents/carers can come with their
little ones for a play and a natter and have
breakfast or a snack

Baby corner, toys and crafts, singing and
story time

Tea, Toast and Snacks available

Free but donations welcome

No need to book

Wollaston Village Hall
contact:

Penny: 07908 182544

Run by Busy Bees Preschool





Wollaston Together – Article May 2025

Getting Involved at Busy Bees!

Being part of the Busy Bees family is what makes us special and a big part of Wollaston.

Our parents, committee members and volunteers help to make us what we are today!

Voice of a parent – *“We went to visit Busy Bees on a whim one Monday morning. After many failed attempts to find a pre-school environment for our son, who we suspected had ASD, we didn’t hold out much hope! The moment we stepped inside we never looked back. We were completely enveloped in welcome and care, not just for our son but for us as parents too. The first thing our son saw was a big box of cars that immediately enraptured him!*

We have been completely supported, above and beyond anything we could ever have expected from a pre-school. We appreciate and love the warm environment, flexibility towards his very specific needs and being in a place where the children are allowed to be themselves and flourish. Our son has completely come out of his shell and grown in confidence.

Busy Bees is a second home to our son, where he is hugged, loved and nurtured! We will all miss the pre-school as our son’s next phase starts in September”.

Camilla

Voice of a volunteer – *“I have been a volunteer at Busy Bees for a year now, usually working on a Wednesday. On Monday 12th May, I did an extra session to help take the children to the allotment for their weekly visits. I had so much fun with them.*

I find working with pre-schoolers very rewarding and varied. Whether it is engaging in imaginary play, helping with painting, doing puzzles or reading. I enjoy it all and no two sessions are the same. The children now call me ‘Nanny Sue’, which I love. I always leave with a big smile on my face!”

Nanny Sue

Voice of the chair/parent – *We actually visited another pre-school before Busy Bees but decided to view others as we didn’t feel comfortable and our daughter didn’t seem keen. As soon as we entered Busy Bees, our daughter wanted to get down and play straight away. This in itself said it all and we haven’t looked back.*

Penny, Jess and Katy have a brilliant bond with all the children and go above and beyond to do the best for them and involving parents to.

I decided recently to go into the Chair role because I love how much time and effort is put into Busy Bees and wanted to be a part of that!

*The children are so happy and you only have to come to one group to see why anyone would want to join Busy Bees. We cannot thank them enough! **Sian***



**Left;
Caring for our
chicks!**



**Right:
When Brynn the
dog came to visit**

If you are looking for a pre-school place please give us a ring on 07908182544 or pop down and see us. We take children **from 2 years**. We are now open till 2pm on Mondays, Wednesdays and Fridays, 12 noon on Tuesday's and Thursday's is toddler group. We also offer earlier starts at 8.30/8.45 if this is required. Please check us out on Facebook **@ Busy Bees Wollaston**, where we have been uploading videos of our setting or find us on Instagram@ **busy_bees_wollaston**. You can also email us at busybeeswollaston@hotmail.co.uk

We look forward to seeing you soon

Penny, Jess and Katy

A visit from the community police officer!



Charity Jazz Night – Shoe Town Big Band

Shoe Town Big Band is a new, exciting ensemble, formed in September 2024. We are based in Northampton, but I live in Wollaston and play alto saxophone in the band. We have a great concert coming up in Bozeat, at St Mary's Church Community Hall, on Saturday 26th July at 7:30pm! You can expect a lovely jazz night style evening, with a layout of chairs and tables, and of course fantastic music from the world of jazz and swing. You can even bring your own refreshments to enjoy throughout the night, as well as buy tea/coffee and biscuits. This is a fundraiser for a really important cause so it would truly mean a lot to see as many locals there as possible.

Lily McGarry is one of my sister's best friends and they are both students in Cardiff. Back in January, Lily was taken to hospital with flu-like symptoms, but her health very quickly deteriorated. Several operations later, she is now a quadruple amputee and came out of Intensive Care on 7th May after more than 3 months. She remains in hospital, on the road to recovery, but will need many prosthetics and adjustments to help rebuild her life. Her family started a "Go Fund Me" page to fundraise for her, and Shoe Town Big Band aim to add as much as we can to this.

Tickets are only £10 each and are available by scanning the QR code on the poster, or at:

www.ticketsource.co.uk/shoetownbigband

Or if you would prefer a physical ticket, drop me a message on 07930 940762.

We will also have a raffle, and I am still looking for prize donations! If you are a local business who can help, or just someone with something suitable to donate then please don't hesitate to get in touch.

Finally, you can check out "Shoe Town Big Band" on Facebook or Instagram (@shoetownbigband) to find out more about the group. Please spread the word about our gig to your friends and family, we'd love to see you there!

Thank you,

Eva Jennings





Charity Big Band Night

An evening of jazz, swing and popular music

St Mary's Church
Community Hall,
Allen's Hill, Bozeat,
NN29 7LW

SATURDAY 26TH JULY 7:30PM

Raffle - 50p per ticket or £2 a strip
Tea and biscuits - available to buy
Bring your own refreshments!

Tickets £10

ticketsource.co.uk/shoetownbigband

Scan the QR code on the right, type in URL above, or contact:

Eva **07930 940762**

Vicki **07960 096391**



Raising funds for
Lily McGarry and
Limb Power -
scan the QR code
to read about her
story





We have another new puppy, amazingly she is puppy number 8, it seems like yesterday that we had our first puppy. This time we have a little girl, she is half Golden Retriever and half Labrador, a lovely yellow little girl called Clemmie.

Usually we talk about the job that Socialisers and Dogs For Good do, this time we'd like to change things and talk about how you can help us train these amazing dogs and get them ready to make a huge difference to a disabled person.

We get asked again and again by new Socialisers how we cope when a small number of the public don't respect the fact that a puppy out in its Charity Jacket is working and should not be distracted.

It's a hard one to answer, we the Socialiser are often the first time a member of the public has seen a Dogs For Good puppy, many are dog lovers and they find themselves face to face with a cute puppy who is training to do a fantastic job for a disabled person. Most people smile and keep walking, this is great for us as our puppy hasn't been distracted and at this age they are distracted by everything. We get others that ask politely if they can say hello, if the puppy is older and working well we might say yes but a lot of the time we have to say sorry, we aren't being mean it is mostly because the pup is young and needs to focus or it could be because we have just spent the last half an hour being run ragged by the little monkey and have only just settled them down to work.

Sometimes we have to deal politely with people who to put it bluntly are clueless about how to behave around an Assistance Dog. This is because there is very little information out there to guide anyone as to how to behave around them.

So we'll do our bit and give out some information. Our puppies jackets have 'I'm working, please don't distract me' printed on them, and that is the bottom line, don't distract them. Just smile and walk by, we love to see that our pup has put a smile on someone's face, but please don't do any of the following:

Don't stop and pet the puppy and tell it how gorgeous it is, ask first, don't swipe at it as you walk by because you want a quick stroke of the puppy, it totally disorients the puppy and annoys the Socialisers as we have a confused pup. If you are out with your own dog, don't bring it over to say hello to the working Assistance pup, the pup needs to know it is working and that it isn't play time, it would help if you could avoid coming too close, but if you can't walk by quickly and don't let your dog near to ours.

And lastly but probably the most common one, please don't stand next to us cooing loudly about how gorgeous the dog is and say you know you must not touch it, the puppy has hearing that is probably 50 times better than yours, it hears someone talking about it and picks up on the high energy, we the Socialisers then have to calm them down and get them focussed again. It isn't always possible to re-focus the pup and we have to take them home and let them decompress, making it a wasted training session.

If you are interested in learning more about the work that Dogs For Good Assistance Dogs do or you are interested in being a Socialiser or volunteer just give us a call on the number below. We also give talks to Clubs, Schools and Businesses

Davina and Steve Williams

Tel 07870434931





Northamptonshire St John Ambulance is recruiting for volunteer Community First Aiders and Youth Leaders. Would **YOU** like to learn how to save a life?

Would you like to attend events as a Community First Aider, including stadium events like the Saints Rugby?

Or maybe you are interested in training as a Youth Leader working with our Badgers and Cadets.

Full training will be given for all roles. uniform is provided.

Recruitment opens on 20th June and the closing date is 1st August.

Please contact:

Marion McGill, West Northants – marion.mcgill@sja.org.uk

Sophie Johnston East Northants – sophie.johnston@sja.org.uk



Wollaston Heritage Society

The committee and volunteers have worked very hard this year and have been rewarded by such support from so many visitors.

We said goodbye to our chairlady, Sue Woodrow, at the AGM. Sue has worked very hard on our behalf for 8 years and deserves a well-earned rest.

This was followed by a very entertaining talk from Will Osborne, of Osborne's toy shop in Rushden. He brought along a variety of interesting items and captivated us with the history of his shop.

Our Easter Egg Hunt was amazing. So many excited children with their families. A lot of volunteers had worked hard in preparation of this event, but it was worthwhile to see such happy faces.

VE Day 80th anniversary was also well attended, and we almost ran out of milk for the refreshments! It was another successful evening which ended in the lighting of the beacon. We are very lucky to have this in our village, as it is a spectacular event.

Every July we hold our Open Gardens day. This year we have added some new gardens and a craft fair, so please look out for the posters, which will be printed soon. The programmes will soon be on sale at Wollaston Museum, Wollaston Library and at Awberry's tea room, in the Yard.

DATES FOR YOUR DIARY

Sunday 6th July Open Gardens

Thursday 14th August Afternoon tea at Grendon Hall (members only)

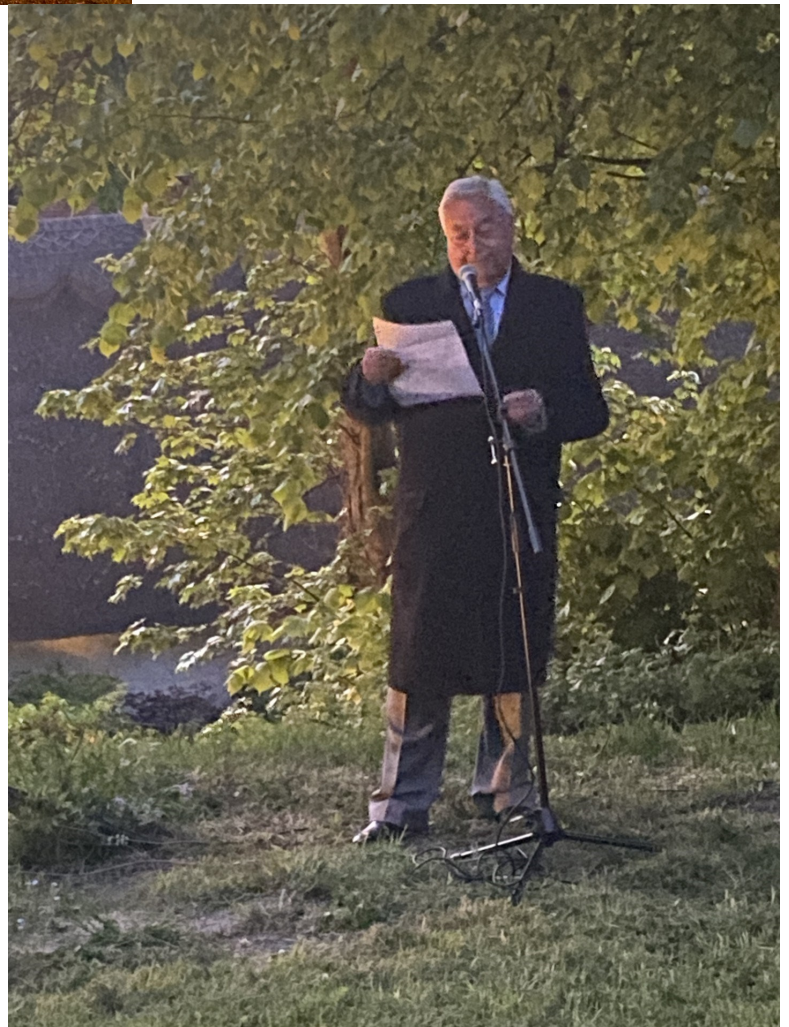
Thursday 11th Sept Talk in the Methodist schoolrooms, by Fay Tennet. "When terror came to Parliament" Fay was on duty as the Deputy Director of Security Ops on that day.

Sunday 14th Sept Rushden Mission Band playing at Beacon Hill



Lighting the Beacon on beacon hill for the VE day commemorations.

Councillor Alvis , chair of Wollaston Parish Council leading the Event.



MAY 8TH 2025 80TH ANNIVERSARY OF VE DAY Speech

Today, we gather with reverence and gratitude as we mark the 80th anniversary of Victory in Europe Day. On this day in 1945, the guns fell silent across the continent, and the darkness of a long and devastating war gave way to peace. The Allied victory brought an end to tyranny in Europe and a hope that the horrors of conflict would never be repeated.

Eighty years have passed since that momentous day. Eighty years since crowds filled the streets, church bells rang out, and the world took a breath—relieved, grieving, and hopeful all at once. We remember not just the end of the Second World War in Europe, but the immense cost it took to get there.

We remember the courage of those who stormed beaches, flew over enemy lines, and defended freedom with every ounce of their strength. We remember the resilience of those on the home front—those who rationed, worked, and waited. And we remember the millions whose lives were cut short by hatred and violence.

Many of those who served are no longer with us. But their stories, their sacrifices, and their ideals remain. They remind us that peace is precious, and that freedom must be defended—not just by arms, but by unity, understanding, and the choices we make every day.

On this 80th anniversary, we do more than look back—we look forward. Let us carry their legacy by standing against division, by choosing compassion over conflict, and by building a future where peace is not a fragile hope, but a lived reality for all.

To our veterans, we offer our eternal thanks. To the generations who follow, we offer this promise: we will remember them—not only in words, but in the lives we live and the world we shape.

May peace be their legacy, and our shared promise.



COMMUNITY CALENDAR

MONDAY		
MORNING	AFTERNOON	EVENING
Wollaston Library & Community Hub OPEN 10.00-12.00	Youth Café, 15.00-16.30 Term-time at St Mary's	Cubs 18.30-20.00 (8-10½ year olds) Term-time at WAY building
Coffee&Chat every Monday 10.30-12.00 at WL&CH		Youth Cell Group 19.00-20.30 St Mary's
Ladies Bible Study Group 09.45-11.30 Baptist Church		The Wollaston Singers 19.30-21.30 The Works

TUESDAY		
MORNING	AFTERNOON	EVENING
Toddlers, Toast & Toys 10.00-11.30 St Mary's	Wollaston Library & Community Hub OPEN 13.00-16.00 Knit & Crochet Group 14.00-15.30	CAMEO 18.30 1 st Tuesday in month at Salvation Army Bible Study/Prayer Meeting 19.30 2 nd Tuesday in month at Salvation Army
	'The Pop-In' 14.00-15.30 Baptist Church	Weekly Prayer Walking & Meeting 19.30 St Mary's
		Beavers 18.15-19.15 term-time 6-8yo Scouts 19.30-21.00 10½-14yo Explorers 19.15-21.00 14-18yo All at WAY building
		Brownies 18.15-19.45 Methodist Hall

WEDNESDAY			23
MORNING	AFTERNOON	EVENING	
Wollaston Library & Community Hub OPEN 9.30-12.00	Wollaston Museum OPEN 14.30-16.30 April-September	Squirrels 18.15-19.15 4-6 year olds Term-time at WAY Building	
Rhymetime 10.00-10.30 Every Wednesday morning at Library (run by Wollaston&Strixton Pre-School)		Songster Practice 18.30 Band Practice 19.30 Both at Salvation Army	
Coffee, Chat, Cake 10.30-12.00 St Mary's		Bell Ringing Practice 19.30 St Mary's	
		Rainbows 18.00-19.00 Methodist Hall	
		Wollaston Women's Institute 19.45-21.15 2 nd Wednesday in month at Baptist Church	
		Rookie Lifeguarding Club 19.00-20.00 Scott Bader Swimming Pool 8-10yo	

THURSDAY			
MORNING	AFTERNOON	EVENING	
Wollaston Tots Group 9.15 –11.00 Wollaston Village Hall Term time only (run by Busy Bees preschool)	Health & Wellbeing Group 14.00-16.00 Monthly at St Mary's Wollaston Library & Community Hub OPEN 14.30-16.30		

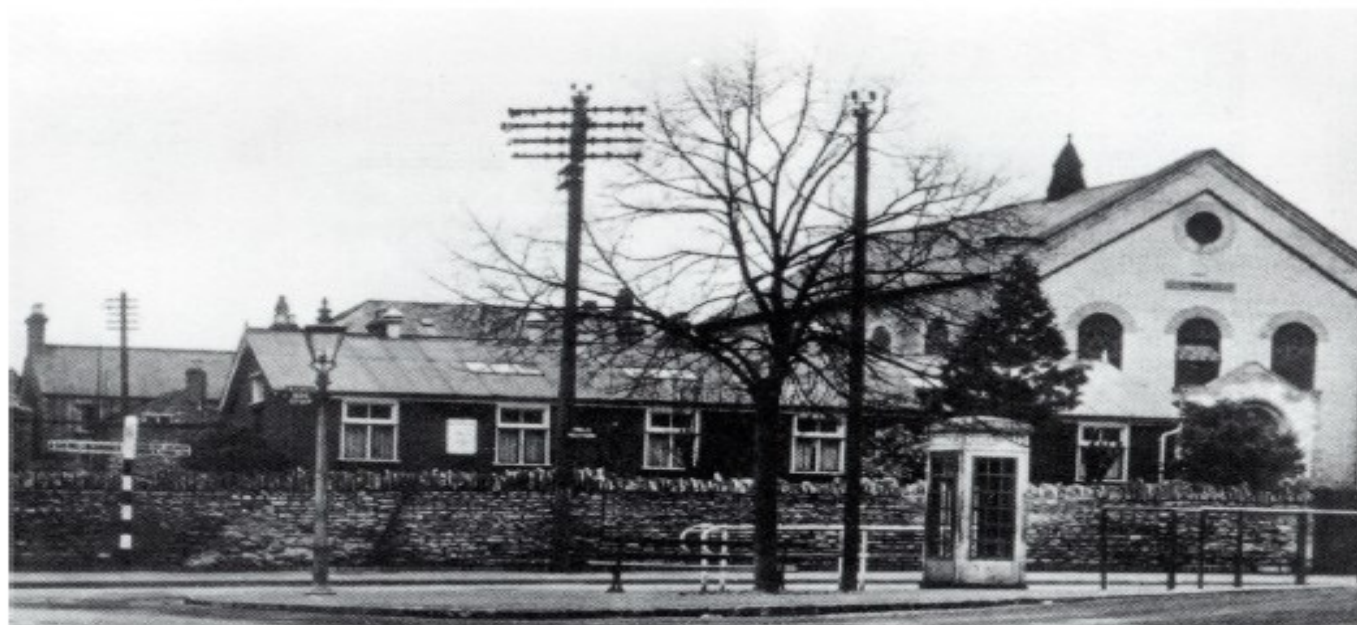
FRIDAY			
MORNING	AFTERNOON	EVENING	
Open Door 09.45-11.00 Salvation Army	Little Pickles 13.30-15.15 Term-time at Baptist Church	Support Group 19.30 St Mary's	
St Mary's Church OPEN 10.00-12.00	Craft & Natter 14.00-16.00 Last Friday in month at Salvation Army	Guides & Rangers 19.00-21.00 Methodist Hall	

SATURDAY		
<i>MORNING</i>	<i>AFTERNOON</i>	<i>EVENING</i>
Thrift Shop OPEN 09.30-12.30		
Wollaston Library & Community Hub OPEN 09.30-11.30 From 02/01/25 09.30-12.00		
Captain's Coffee Morning 09.45-11.00		

SUNDAY		
<i>MORNING</i>	<i>AFTERNOON</i>	<i>EVENING</i>
Salvation Army Worship, Praise, Prayer & Fellowship 10.30 Sunday School 11.00	Wollaston Museum OPEN 14.30-16.30 April-September	
Baptist Church Breakfast Church 10.00 (breakfast followed by half hour service at 10.30) on 1 st Sunday Sunday Service at 10.30 on 2 nd Sunday Sunday Communion Service at 10.30 on 3 rd Sunday (Baptist Church continued) Sunday Service at 10.30 on 4 th & 5 th Sundays Prayer Together and Bring & Share meal follows the service on the last Sunday of the month. Creche and Junior Church available.		
St Mary's Church Sunday Service 11.00 at St Mary's Sunday Service 09.00 1 st & 3 rd Sundays at Strixton		

Contact Details

Baptist Church	01933 327709		
Wollaston Community Library	01604 368255	Methodist Church	01933 664513
Youth Club	wollastonnyc@outlook.com	St Mary's Church	01933 664256
Wollaston Singers	07734 105222		
Salvation Army	01933 663125	Rookie Lifeguarding	07905 604384
2 nd Wollaston Scouts	2ndwollaston@gmail.com		



The original Baptist Church and institute. The church was demolished in 2012 and replaced with a new, larger building.

Photo: Barry Robinson's Pictorial History of Wollaston Vol I.

According to Barry Robinson's books, the old hut was purchased by the Baptist Church in 1924/25 for £120, to be used as a social club. It went on to host Wollaston's first youth club, marking a significant moment in the village's community life. Bernard recalled:

"Opposite what was Palmer's Shop is The Baptist Chapel and Sunday school rooms. There were two tennis courts next to the Chapel and also quite a large corrugated building that had probably been an army hut. The building was large enough to contain a full sized snooker table and also a table tennis table. Everything was shortened in those days and it was called 'The Stute'. The whole place was heated

by a coke-fired cast iron stove, a devil to light, but once going it turned out quite a bit of heat. I took shelter under the snooker table on the night of Thursday November 14th 1940, the night that Coventry was very heavily bombed by the German Air Force. The Nene Valley was right on the flight path, and many bombs were released in panic in this area. The bombs were close enough to make the old corrugated tin hut rattle quite a bit. Bert Barnes was a friend at the time; he used to cut the tennis court grass and light the fire. I was waiting for him when the bombs fell." In November 1940, Bernard was 17 years old.

Phil Smart.



We show girls from 4 to 18 a world of possibilities big and small - one where every girl can laugh, learn and have adventures.

Girlguiding is what each girl wants it to be. It might be the thrill of doing something for the first time. Songs around a campfire. The buzz of getting a new badge. Coming home exhausted and full of stories. We offer a space where she can get creative, explore, become more confident, and most of all have fun.

We give girls a space to belong

Girlguiding offers girls a space to belong and have fun. We bring girls together to have incredible adventures, figure out what makes them tick, share laughs and learn about the world around them. Maybe you recognise us from your own childhood, used to know us as the 'Girl Guides', or spotted our iconic Jeff Banks-designed uniform out and about? Whether your child comes from generations of guiding or your family's completely new to our movement, she'll find a space to belong here.

Girls take the lead in guiding

As well as making lasting friendships, there are loads of ways your child will develop her own leadership skills here too. Whether that's volunteering in a [young helper role](#), or joining one of our fantastic youth panels - experiences in guiding are designed to help girls build confidence and take on new challenges at their own pace. Your child will help choose the activities she takes part in with her unit, and also pick interest badges in topics or areas she's most interested in learning more about - giving her space to discover her individuality and grow.

Girlguiding in Wollaston

All our Units meet at the Methodist Hall, College Street (opposite the junior school) at the following times:

Rainbows – aged 4 to 7 years	Wednesday 6-7pm
Brownies - aged 7 to 10 years	Tuesday 6.15pm - 7.45pm
Guides - aged 10 to 14 years	Friday 7 –9pm

If you would like to join us for lots of Fun and Activities, please get in touch on 07968 091988 (Gemma) or 07858 886356 (Barbara).

Look out in the next issue for write-ups from the girls on what they get up to and the fun they have.

St. Marys Wollaston

Vision: To be a church that increasingly sees God's kingdom come

Who are we...

We are a vibrant, growing, charismatic village church community, who believe that Jesus came to give us life. So we long to see Him bring joy, peace, hope and healing into every aspect of our lives. Whether you have strong beliefs, just curious or somewhere in between, you will be made very welcome.

What's on...

Here's a brief look at what's on weekly...

SUNDAY:	11am, Wollaston Sunday Service* (groups for children & youth) (Alternative traditional service at Strixton: 1st & 3rd Sundays - 9am)
MONDAY:	3-4:30pm, Youth Cafe (during term time) 7-8:30pm, Youth Cell Group
TUESDAY:	10-11:30am, 3Ts (Toddlers, Toast & Toys) Toddler Group 7:30pm Weekly Prayer Walking & Meeting
WEDNESDAY:	10:30-12pm, 3Cs (Coffee, Chat, Cake) 7:30pm, Bell Ringing Practice

* this service is live streamed and can be accessed via our website, Facebook page or Youtube channel, see below:



ALPHA course



The Bereavement journey



Discovering
treasure
in life's scars

Wellbeing groups

Who to contact...

For more details of the above, or for enquiries about baptism, a wedding or a funeral, please contact the church as below:

Church email: webschurche@gmail.com

Rev'd Adrian Morton (vicar): Tel. 01933 664256

Rev'd Holly Horspole (curate): Tel. 07354410513



<http://stmaryswollaston.com>



search for 'St. Marys Wollaston'



search for St. Mary's Bozeat & Wollaston Northamptonshire

WOLLASTON BAPTIST CHURCH

Hinwick Road, Wollaston

Working in and for the community

Rev Brian White

01933 327709

wollastonbc.minister@gmail.com



If you are interested in any of our activities, would like prayer, a visit, or simply want to talk to someone, contact the Church Office on 01933 664114 email: office.wollastonbc@gmail.com or contact Brian, our Pastor.

More information and up to date events & activities are on our Noticeboard
Website www.wollastonbaptist.co.uk Facebook page [Wollaston Baptist Church Group](https://www.facebook.com/WollastonBaptistChurchGroup)



Usual Service Schedule

1st Sunday of the month
'All Age Late Late Breakfast Church'
10.00 am Breakfast followed by a half hour service at 10.30am

2nd Sunday Service at 10.30am

3rd Sunday Communion Service at 10.30am
Prayer Meeting 6.00 - 7.00pm

4th Sunday Service at 10.30am

5th Sunday Service at 10.30am

Refreshments available after the morning services

Bring & Share meal follows the service, on the **last** Sunday of the month

Creche and Junior Church available

1st Sunday of the Month

All Age Late Late Breakfast Church

10.00am Breakfast

Followed by short

all age service 10.30am



Various groups meeting in people's homes and the church for fellowship, Bible study, discussion and prayer



We are a group of ordinary people who believe that God is real, and makes a real difference to people's lives

Mondays

(Term Time Only)

Ladies' Bible Study Group

Meet at 9:45am for tea/coffee and chat



Bible study and prayer
10-11:30am



Tuesdays

"The Pop In"

Social Afternoon



All welcome
2:00-3:30pm



Pool Snooker
Drafts
Table Tennis
Games Quizzes



Fridays

(Term Time Only)



Little Pickles

Baby & Toddler Group

Fridays (term time)

1:30 - 3:15pm

Drink & Snack, Toys, Craft,
Messy Play, Song Time & more!



[Little Pickles \(Wollaston\)](https://www.facebook.com/LittlePicklesWollaston)



It was an encouraging start to the season with both the First and Second teams starting the season with victories against Irthlingborough and Finedon 2nds respectively.

Unfortunately the Third's, who started a week later, lost a close game at Isham. However, at the time of writing, the senior teams have chalked up 3 wins between them and the junior section (U11, U13 and U15) have recorded four victories so far.

Coaching and nets are on Thursday evenings with the Under 9's on Friday evenings.

Why not come down, relax and have a drink from the bar and take in the sunshine?

Fixtures and results can be found on our website which is wollastoncc.co.uk
we can be contacted at wollaston.cricket@googlemail.com



As most people will be aware due to a lack of players, we were unable to enter our 1st Team and Reserve Team in the Northants Combination League on Saturdays for the 2024/25 season.

We have kept our committee in place and have put together a new team management group, who in turn have been looking at players to join us. The good news is that we feel that we have enough interest in playing Saturday football again and have therefore made an application to re-join the league for the coming season. It is our hope to play a predominately young side, with support from some senior players to aid the introduction into adult football.

We will not know until June if our application has been successful, but we hope that the other clubs will vote us back into the league at the AGM.

Please look out for updates regarding Pre-season Training and Friendlies on social media.

With regards to the current season our Veterans Team have continued to play and reached the final of the, Northampton Town Football Association Cup, which was played at Whitworths Football Club at the end of April. Unfortunately, the lads lost out to Mereway Veterans in a close competitive game in front of a crowd of approximately 200 people.

The committee would like to express their thanks to the people of the village who have asked about the return of the Vics on Saturdays next season and for the support given to Veterans, particularly at the cup final.

Village Hopper



Enquiries 07512 045418 Timetable from 22.4.25

Northampton - Stanwick Lakes via Cogenhoe, Bozeat, Wellingborough & Rushden Lakes.									
Journey number	VH1	VH1	VH1	VH1	VH1	VH1	VH1	VH1	VH1
Monday to Saturday		SD					SD		
Northampton College of Further Education (SD)								15:40	17:40
Northampton Bus Interchange (Bay 14)			08:30		12:00	14:00	14:00	16:00	18:00
Northampton College of Further Education (SD)			R		—	—	—	—	—
Weston Favell Shopping Centre (Billing Brook Road) D			—	10:30	—	14:15	14:15	—	—
Northampton General Hospital (Stop B)			—	—	12:06	—	—	16:06	18:06
Brackmills, adj Footpath to The Lakes			08:55	10:40	12:11	14:25	14:25	16:11	18:11
Great Houghton, White Hart			08:58	10:43	12:14	14:28	14:28	16:14	18:14
Great Houghton, adj Lime Farm Way			R	R	R	R	R	R	R
Little Houghton, o/s St Mary's Church			09:02	10:47	12:18	14:32	14:32	16:18	18:18
Brafield-on-the-Green, opp Grove Road			09:04	10:49	12:20	14:34	14:34	16:20	18:20
Billing Aquadrome (roundabout, Crow Lane)			—	—	12:25	14:39	R	R	—
Cogenhoe, opp The Royal Oak PH	07:15	07:15	09:10	10:55	12:30	14:44	14:44	16:30	18:26
Whiston, adj The Green	07:19	07:19	—	R	12:33	14:47	14:47	16:33	R
Castle Ashby Bus stop	—	—	—	R	12:36	14:50	14:50	16:36	R
Grendon, adj Parsons Close	07:23	07:23	09:14	11:00	12:39	14:53	14:53	16:39	R
Easton Maudit, o/s St Peter and St Paul's Church	07:25	07:25	09:16	11:02	12:41	14:55	14:55	16:41	R
Bozeat, adj Camden Square	07:28	07:28	09:19	11:05	12:44	14:58	14:58	16:44	R
Bozeat opp St Mary's Road	07:29	07:29	09:20	11:06	12:45	14:59	14:59	16:45	R
Bozeat, opp Allens Hill	07:31	07:31	09:22	11:08	12:47	15:01	15:01	16:47	R
Wollaston, outside Nags Head Inn	07:35	07:35	09:26	11:12	12:51	15:05	15:05	16:51	R
Wollaston, opp Priory Road	07:38	07:38	09:29	11:15	12:54	15:08	15:08	16:54	
Wellingborough Church Street Interchange (Bay B)	07:49	R	09:40	11:26	13:05	15:19	15:22	17:05	
Wellingborough Dog and Duck	—	—		11:30	13:09	15:23	—	17:09	
Glenvale Park, Primary School	—	08:05		—	—	—	—		
Christopher Hatton School	—	08:11		—	—	—	—		
Wellingborough Church Street Interchange (Bay B)	R	R		—	—	—	—		
Christopher Hatton School	—	—		—	—	—	15:25		
Glenvale Park, Primary School	—	—		—	—	—	15:31		
Wellingborough, Park Farm, Shaw Close	07:55	08:17		—	—	—	—		
Earls Barton, St Crispin Road	08:05	08:27		—	—	—	—		
Brackmills, opp Footpath to The Lakes	R	R		—	—	—	—		
Rushden Lakes (Stop 1)				11:37	13:16	15:30	15:42		
Dolben Avenue (via Stanwick Lakes) (Saturday & School holidays only)				R					

Stanwick Lakes to Northampton via Rushden Lakes, Wellingborough, Bozeat & Cogenhoe						
Journey number	VH1	VH1	VH1	VH1	VH1	VH1
Monday to Saturday						
Dolben Avenue (via Stanwick Lakes) (Saturday & school holidays only)						16:22
Rushden Lakes (Stop 1)				12:00	13:30	16:30
Wellingborough Church Street Interchange (Bay B)			10:09	12:11	13:41	16:46
Wellingborough Dog and Duck			10:13	12:15	13:45	16:57
Wollaston, adj Priory Road	07:28	*08:53	10:20	12:22	13:52	17:05
Wollaston, outside Nags Head Inn	07:31	08:56	10:23	12:25	13:55	17:08
Bozeat, adj Allens Hill	07:35	09:00	10:27	12:29	13:59	17:12
Bozeat, adj Camden Square	07:37	09:02	10:29	12:31	14:01	17:14
Bozeat opp St Mary's Road	07:38	09:03	10:30	12:32	14:02	17:15
Easton Maudit, opp St Peter and St Paul's Church	07:41	09:06	10:33	12:35	14:05	17:18
Grendon, opp Parsons Close	07:43	09:08	10:35	12:37	14:07	17:20
Castle Ashby Bus stop	—	09:11	—	12:40	14:10	R
Whiston, opp The Green	07:47	09:14	—	12:43	14:13	R
Cogenhoe, o/s The Royal Oak PH	07:51	09:17	10:39	12:46	14:16	17:26
Billing Aquadrome (roundabout, Crow Lane)	—	09:22	10:44	12:51	14:21	17:31
Brafield-on-the-Green, adj Grove Road	07:57	09:27	10:48	12:56	14:26	17:36
Little Houghton St Mary's Church (near)	07:59	09:29	10:50	12:58	14:28	17:38
Great Houghton, White Hart	08:03	09:33	10:54	13:02	14:32	17:44
Great Houghton, adj Lime Farm Way	R	R	R	R	R	R
Brackmills, opp Footpath to The Lakes	08:06	09:36	10:57	13:05	14:35	17:49
Northampton General Hospital (Stop A)	08:11	09:41	11:02	13:10	14:40	R
Northampton Bus Interchange (Bay 14)	08:17	09:47	11:08	13:16	14:46	R
Northampton College of Further Education (SD)	R	R				—
Weston Favell Shopping Centre (Billing Brook Road) D		R				—
Earls Barton, opp St Crispin Rd						R
Wellingborough, Park Farm, Shaw Close						R

R - on request only for passengers remaining on the bus or who have booked a pick-up via 07512 045418

*Concessionary passes will be accepted on this service
Days only only (Mon-Fri)

SD—School

Where is the
bus?

Scan the QR
code to find out

For details of our current fares please visit our website
www.cogenhoeandwhiston-pc.gov.uk/village-hopper-bus



Guerilla pebble art



Guerilla pebble art in the UK involves creating and displaying artwork made from painted or decorated pebbles in public spaces, often without permission. This form of art is temporary and can be a playful way to bring a bit of beauty and surprise to everyday environments



What it is: Guerilla pebble art is a form of temporary street art that uses painted or decorated pebbles as its medium. These pebbles are often placed in unexpected locations, like parks, sidewalks, or even in front of shops, to brighten up the area and surprise passersby.



How it's done: Guerilla pebble art involves taking ordinary pebbles and transforming them into works of art. This can involve:

- **Painting:** Applying paint or markers to create designs, patterns, or even portraits on the pebbles.
- **Decorating:** Using other materials like glitter, beads, or small objects to add embellishments.

Arrangement: Creating mosaics or other arrangements with the painted pebbles.

Why it's done: Guerilla pebble art can be motivated by a variety of reasons, including:

- **Creating art:** Artists may want to share their creations with the public.
- **Bringing joy:** The art can brighten up dull spaces and bring a smile to people's faces.

Social commentary: The art can sometimes be used to make a statement about a particular issue.

Where to find it: Streets of Wollaston?

Contact today for a FREE no obligation quote

07930 683 020
info@wattadreamclean.co.uk
wattadreamclean.co.uk

Watt A
Dream Clean 

COMMERCIAL CLEANING SERVICE



We ensure your professional
space sparkles and impresses
your clients

ANIMALS IN NEED

RESCUE HOME

If you have an old towels,
blankets, pet food, newspapers,
bric-a-brac or tombola raffle
prizes that you would like to
donate to Animals in need,
please phone Maggie on
663313, who is happy to collect
them for you and deliver them
to the rescue home in Little
Irchester.

Thank you to everyone who has
donated in the past!

The Thrift Shop

Open Saturdays

9:30am—12:30pm

All money goes to support



Come along and have a browse or
drop off some of your items.

Donations to The Thrift Shop

Please ensure all items donated
to The Thrift Shop are in good
condition and suitable for us to
sell. 😊

Recycling unsuitable goods takes
up a lot of our time and energy! 😊

If you are not sure about a
particular item, we will be
pleased to advise. 😊

Many thanks for your support
and understanding. 😊

The Thrift Shop Volunteer Team x



Looking for a little extra help at home, support with shopping, or simply someone to share a cup of tea and a chat with?

Brighter Days are here for you...bridging the gap of loneliness with friendship and support.

Call Rachel on 07351 980946
Email: brighterdays4u@icloud.com
Covering Wollaston and surrounding areas

OUR SERVICES:

Companionship
A Friendly Face
Respite for Carers
—
Home Help
Light Cleaning / Laundry
—
Shopping / Errands
Transport / Trips
Dog Walking
—
Meal Preparation
Medical Reminders
Post Hospital Support
—
Welfare Checks
Admin Support
—
DBS Registered



Myton Food, Crown Way, Higham Ferrers,
NN10 6BS with Mark 07445 592259
Sundays 9am

Rushden Masonic Hall NN10 9PN
With Donna 07736 546580
Thursdays 9:30am and 11:00am
Fridays 7:30am, 9:00am and 10:30am
Saturdays 7:00am, 8:30am and 10:30am

Parsons Hall Irchester NN29 7AB
With Emma Louise 07786 912981
Mondays 5.30pm and 7.00pm

Earls Barton Working Mens Club
Queen Street, NN6 0LN
with Maggie 07702 762491
Wednesdays 5.30pm and 7.00pm
Saturdays 8.30am

real food, real support, real results



TILLEY'S WINES est.1985



LOCAL WINE CASES WITH FREE DELIVERY

CORPORATE GIFTING
EVENT TASTINGS
WEDDINGS
NEXT DAY DELIVERY

01933 664792 • WWW.TILLEYS-WINES.COM

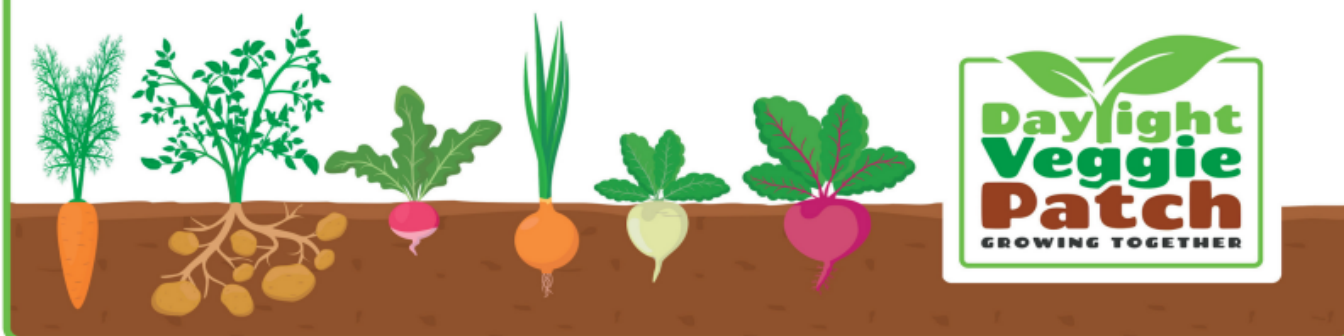
49-59 EASTFIELD ROAD • WOLLASTON • NN29 7RS



The Daylight Veggie Patch is a community allotment project run by the Daylight Centre on The Pyghtles in Wollaston.

We grow organic produce in partnership with our service users to help feed the homeless and those experiencing food poverty.

You can support us by volunteering with us or by buying our products. For more information, please visit www.daylightcf.org/veggiepatch



**10, High Street Place, Wellingborough, NN8 4HP
Reg Charity No 1100809 | Company No 4625186**